

Monogram Sanitation
800 W. Artesia Blvd., Compton, CA 90244-9057

TOILET ASSEMBLY

PN 17000 & 17010 SERIES

**COMPONENT MAINTENANCE MANUAL
WITH
ILLUSTRATED PARTS LIST**

DISTRIBUTION STATEMENT

This document contains proprietary information of Monogram Sanitation, and it is issued in strict confidence. Except for rights expressly granted by contract, this document may not, in whole or in part, be duplicated, reproduced, disclosed, or used for design or manufacturing purposes without written authorization from Monogram Sanitation.

IPL170-2

**T-1
Aug 14/92**

Monogram Sanitation

COMPONENT MAINTENANCE MANUAL PN 17000 & 17010 Series

TABLE OF CONTENTS

<u>SUBJECT</u>	<u>PAGE</u>
Introduction	INTRO-1
General	INTRO-1
Assembly Relationship	INTRO-1
Use of Parts List if Part Number is Not Known	INTRO-1
Usage Codes	INTRO-1
Vendor Codes	INTRO-2
Abbreviations	INTRO-3
Symbols	INTRO-3
Description and Operation	1
General	1
Description	1
Operation	2
Leading Particulars and Servicing	3
Servicing Instructions	3
Troubleshooting and Maintenance	7
Cleaning	9
Repair	10
Check	12
Illustrated Parts List	13
Introduction	13
Purpose	13
How to Use the Illustrated Parts List	13
Parts Replacement Data	14
Service. Bulletin Incorporation	15
Special Terms and Symbols	15
Usage Code List	16
Usage Code List	28

Monogram Sanitation

COMPONENT MAINTENANCE MANUAL PN 17000 & 17010 Series

ILLUSTRATIONS

<u>FIGURES</u>	<u>PAGE</u>
Leading Particulars Table	3
Troubleshooting Equipment Table	7
Wiring Diagram	12
Figure 1-Toilet Assembly	18
Figure 2-Tank Assembly	25
Figure 3-Motor-Pump Assembly	29

Monogram Sanitation

COMPONENT MAINTENANCE MANUAL PN 17000 & 17010 Series

INTRODUCTION

1. General

This publication lists, identifies and illustrates component assemblies, subassemblies and detail parts of 17000 and 17010 series toilet assemblies manufactured by Monogram Sanitation, 800 W. Artesia Blvd., Compton, California 90224-9057.

2. Assembly Relationship

Each assembly listed is followed immediately by a listing of its detail parts properly indented to show their relationship to the assembly. Parts are listed in general order of disassembly with the exception of attaching parts, which are listed immediately following the item which they attach and which precede the components, if any, of that assembly. Item numbers in the parts list correspond to item numbers in the accompanying exploded view illustration.

3. Use of Parts List If Part Number Is Not Known

Review the illustrations and identify the part by appearance or location. Note the item number in the exploded view and check the corresponding item number in the accompanying parts list to find the part number, description, and quantity for that application.

4. Usage Codes

The applicability of a particular part to its primary assembly is indicated by a code letter in the USAGE CODE column of the parts list. If no entry is made in the "USAGE CODE" column, the part is applicable to all primary assemblies listed.

Monogram Sanitation

COMPONENT MAINTENANCE MANUAL PN 17000 & 17010 Series

5. Vendor's Codes

Vendor's parts used in the equipment are listed by the vendor's part number, vendor's description of the part, and vendor's code preceded by the letter "V", listed in parentheses following the description of the part. The vendor codes used in this publication are listed immediately following this paragraph. The code identification for Monogram Sanitation, or standard parts (e.g., AN, MS or NAS) has not been included in the parts list and the absence of a code following a part description means the item is a Monogram Sanitation, part or a standard part.

CODE	VENDOR'S NAME AND ADDRESS
V00779	AMP Inc. 2800 Fulling Mill Rd. P.O. Box 3608, Harrisburg, PA 17105-3608
V02697	Parker-Hannifin Corp., Seal Group 2360 Palumbo Drive P.O. Box 11751, Lexington, KY 40509
V25220	Shamban W.S. and Co. 11543 W. Olympic Blvd., Los Angeles, CA 90064
V30327	Clevite An Imperial Clevite Co., Fluid Components Div. 6300 W. Howard St., Chicago, IL 60648
V59730	Thomas and Betts Corp. Hwy 218 S., Iowa City, IA 52240
V66295	Wittek Microdot Fastening Systems 1421 Barnsdale Rd., La Grange Park 60525
V76599	Murray Corp. Greater Baltimore Industrial Park, Schilling Circle Cockeysville, MD 21030
V81872	Olympic Plastics Co. 5800 W. Jefferson Blvd., Los Angeles CA 90016
V94222	Southco Inc. 210 N. Brinton Lake Rd., Concordville, PA 19331

Monogram Sanitation

COMPONENT MAINTENANCE MANUAL PN 17000 & 17010 Series

6. Abbreviations

Abbreviations used throughout this manual are defined as follows:

AR	As Required
ASSY	Assembly
FIG.	Figure
FRO	Future Replacement Order
NHA	Next Higher Assembly
No.	Number
REQ	Required
RF	Reference
REPLD	Replaced
REPLS	Replaces
SB	Service Bulletin
SN	Serial Number
SUBS	Subsequent
TTL	Total
V	Vendor

7. Symbols

***	Designates the end of each group of attaching parts.
-	A dash before an item indicates the item is not illustrated or does not have a leader and assigned index number on the exploded view illustration.

Monogram Sanitation

COMPONENT MAINTENANCE MANUAL PN 17000 & 17010 Series

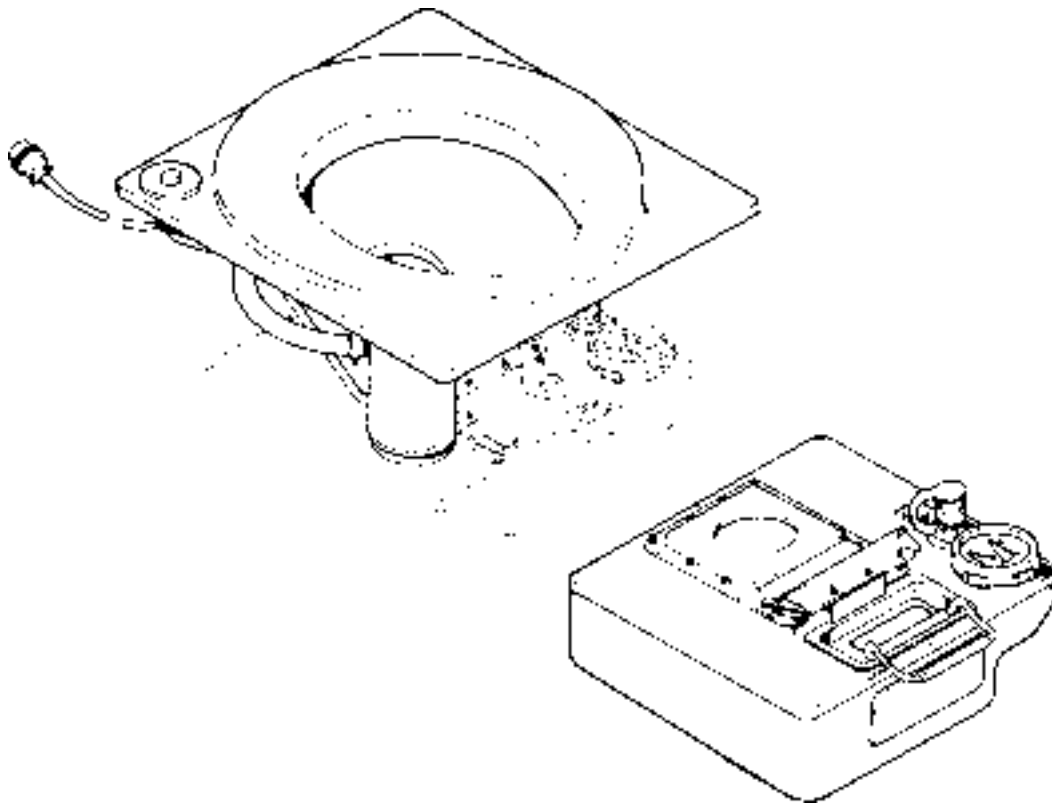
DESCRIPTION AND OPERATION

1. General

A. This publication is issued to provide instructions for servicing and maintenance of MONO-LAV® Aircraft Toilet Assembly, manufactured by Monogram Sanitation, Compton, California. The unit is a light weight, compact, electrically operated flushing toilet which utilizes ordinary tap water and a germicidal deodorant, Monogram's Chemkare, as a flush fluid.

2. Description

A. The recirculating flushing toilet is a completely self-contained unit requiring only the external connection of 24-28 volt DC electrical power. The toilet assembly is designed for permanent installation in the aircraft, requiring only the removal of the waste tank when servicing is desired.



Toilet Assembly
Figure 1

Monogram Sanitation

COMPONENT MAINTENANCE MANUAL PN 17000 & 17010 Series

B. The assembly consists basically of a seat and shroud assembly which rests on the toilet mounting plate. Attached to the mounting plate are the polished stainless steel bowl assembly, the motor and pump assembly, and the PRESS TO FLUSH switch. Mounted to the bottom flange of the bowl is the slide assembly into which the removable tank assembly is installed.

C. The removable tank assembly consists of a storage tank on which the knife valve, flush line quick disconnect and carrying handle are located. Extending through the cover of the knife valve is a manually operated actuator to open or close the knife valve, sealing the tank contents prior to removal of the tank. The position of the knife valve may be observed through the opening at the bottom of the bowl.

D. The tank assembly detaches from the toilet at the front of the unit. Two Pres-Loc fasteners, one on each side of the knife valve, secure the installed tank in the sealed position against the bottom of the bowl. By detaching and draining the flush line at the quick disconnect, depressing the two Pres-Loc fasteners, and by pulling the carrying handle, the tank is easily removed for servicing.

3. Operation

A. The flush cycle is initiated by pressing the PRESS TO FLUSH button on the seat and shroud assembly. The push button switch applies 24-28 volt DC power to the motor section of the motor and pump assembly. Flushing continues until the push button is released. During the flush cycle, flushing fluid is pumped from the waste tank to the bowl by the self-priming pump section of the motor and pump assembly. The flush fluid enters the bowl through a nozzle in the upper rim and washes the inner surface of the bowl in a swirling pattern. Waste is carried to the waste tank through the knife valve below the bowl. When desired, the removable waste tank may be removed from the toilet for servicing after closing the knife valve.

Monogram Sanitation

COMPONENT MAINTENANCE MANUAL PN 17000 & 17010 Series

4. Leading Particulars

Use	Aircraft Toilet Facilities
Electrical Power Requirement	+28 VDC, 7.5 AMPS
Pump Type	Self-priming Vane
Fluid Pump Rating (Nominal)	5 GPM
Flush Cycle	Continuous (with flush switch depressed)

Leading Particulars

Table 1

5. Servicing Instructions

WARNING: FOR SANITARY REASONS, ALWAYS WEAR RUBBER GLOVES (ELBOW LENGTH) WHILE SERVICING OR WHEN HANDLING PARTS WHICH HAVE BEEN IN CONTACT WITH THE FLUSHING FLUID.

The toilet should be serviced during routine ground maintenance of the aircraft following any usage. It is more efficient and convenient to remove, clean and recharge the toilet tank on a regular basis than to wait until the tank is filled to capacity. If the tank becomes filled above the knife valve, follow the instructions below:

NOTE: To avoid spillage, do not remove tank when the fluid level is above the knife valve.

- (a) Hold a small paper or plastic cup against the bowl interior (preferably at the bowl flush ring outlet).
- (b) Depress the “Push to Flush” button to circulate flushing fluid.
- (c) Pour the flushing fluid into a bucket until the fluid level is below the knife valve.

Monogram Sanitation

COMPONENT MAINTENANCE MANUAL PN 17000 & 17010 Series

A. Initial Precharge

The removable tank is to be precharged with a mixture of 2 quarts of water and 1 dissolvable package of germicidal deodorant, Monogram's Chemkare.

B. Servicing the Toilet

Instructions for servicing are provided on a decal applied to the front side of the removable tank. Instructions are as follows:

(1) Tank Removal

- (a) Open front access to the toilet, as applicable, to remove the toilet tank.
- (b) Depress the lock ring of the flush hose quick disconnect coupling located on the right side at the front of the tank top.
- (c) Drain any residue of flush fluid in the hose by partially disengaging the plug from the quick disconnect and manipulating the hose to assist drainage.
- (d) Remove the flush hose from the quick disconnect and place hose in the retaining clip located on the underside of the toilet mounting plate.
- (e) Install the plug attached to the quick disconnect to seal the coupling.
- (f) Close the knife valve at the bottom of the toilet bowl by pushing the actuator handle until the valve is fully closed.
- (g) Press the two Pres-Loc fasteners on each side of the knife valve actuator to unlock the tank.
- (h) Remove the tank by pulling the recessed carrying handle on the tank top.

(2) Tank Cleaning

- (a) Remove cap from the pour spout to dispose of tank contents in a sewer or toilet. On earlier models without the pour spout, dispose of tank contents by holding the tank upside-down over a sewer or toilet and pull the knife valve actuator handle, opening the valve and allowing the tank to drain.

Monogram Sanitation

COMPONENT MAINTENANCE MANUAL PN 17000 & 17010 Series

(2) Tank Cleaning (continued)

- (b) Rinse the tank by filling one-half full with water. Close the knife valve and shake vigorously. Drain tank as in previous step (a).

NOTE: Commercial detergents and disinfectants can be included in the rinse water if desired. However, do not include these materials in the tank precharge.

- (c) Rinse and drain the tank several times to ensure that the tank is thoroughly clean.
- (d) Wipe the exterior surfaces of the tank using a cloth moistened with clear water and disinfectant.

(3) Tank Recharge

- (a) Charge the tank with a mixture of 2 quarts of water and 1 dissolvable package of Monogram's Chemkare chemical.

NOTE: To assure toilet recirculation system operation during freezing weather, an ethylene glycol base antifreeze containing anti-foam agent may be added to the flush fluid.

(4) Tank Installation

- (a) Reinstall the tank by inserting the slides located on each side of the knife valve into the slide plate assembly on the bottom of the toilet bowl and slide tank into place.
- (b) Press the two Pres-Loc fasteners to the first detente to secure the tank.
- (c) Remove the plug in the flush hose quick disconnect and connect the hose coupling to the quick disconnect. Lock the disconnect lock ring.
- (d) Pull the knife valve actuator to fully open the valve.
- (e) Lift the toilet seat and shroud assy from the top of the toilet and wipe with cloth moistened with clear water and disinfectant. Wipe the bowl and surrounding area.

Monogram Sanitation

COMPONENT MAINTENANCE MANUAL PN 17000 & 17010 Series

- (4) Tank Installation (continued)
 - (f) Check flushing operation of the toilet and check for leaks.
 - (g) Close access to the toilet.

Monogram Sanitation

COMPONENT MAINTENANCE MANUAL PN 17000 & 17010 Series

TROUBLE SHOOTING AND MAINTENANCE

1. Troubleshooting

A. Unless the toilet has been suitably tagged to denote the nature of maintenance requirements, refer to the Troubleshooting Chart as necessary to isolate and identify possible troubles.

Problem	Possible Cause	Corrective Action
Toilet will not operate	Electrical power not applied (24-28 VDC)	Check aircraft power, fuse/ circuit breaker, electrical connection
	Defective wiring	Check wiring continuity
	Defective flush switch	Replace flush switch
	Defective motor	Replace motor and pump assy
Toilet operates but flush fluid not pumped into bowl	Inadequate flush fluid charge in tank	Charge toilet tank. Refer to Servicing Instructions
	Defective Pump	Replace motor and pump assy
	Bowl, nozzle, connecting hoses or strainer in tank clogged	Remove obstruction. Back flush to clean strainer. Refer to Cleaning.
	Flush (suction) hose not connected to tank quick disconnect	Connect hose to quick disconnect coupling.

Table Equipment

Table 102 (Page 1 of 2)

Monogram Sanitation

COMPONENT MAINTENANCE MANUAL PN 17000 & 17010 Series

Problem	Possible Cause	Corrective Action
Excessive noise during during operation	Defective motor or pump	Replace motor and pump assy
	Strainer in tank clogged	Clean strainer (back flush)
Toilet has excessive odor	Excessive usage	Service toilet. Refer to Servicing Instructions.
	Improper deodorant/ chemical used	Use recommended chemical. Monogram Chemkare.

Table Equipment
Table 102 (Page 2 of 2)

Monogram Sanitation

COMPONENT MAINTENANCE MANUAL PN 17000 & 17010 Series

CLEANING

1. Cleaning

The following methods should be used for cleaning the toilet before disassembly and also for cleaning the disassembled components. Use specified cleaning agents.

A. Back Flushing the Tank

- (1) Back flush the toilet tank to clean the strainer inside the tank by connecting a water hose to the quick disconnect coupling on the tank top.

B. Cleaning Procedure

- (1) The toilet should be cleaned manually using a strong solution of hot soapy water and disinfectant. Rinse thoroughly with clean water and dry completely with a cloth and warm dry air.
- (2) Wash all mechanical parts in a strong solution of hot soapy water and disinfectant.

WARNING: WHEN USING TRICHLOROETHYLENE, WEAR SUITABLE PROTECTIVE GLOVES. TRICHLOROETHYLENE ABSORBS MOISTURE READILY AND CAN CAUSE SERIOUS BURNS WHEN IN PROLONGED CONTACT WITH SKIN.

- (3) Clean electrical parts manually, using cloth moistened sparingly with trichloroethylene.
- (4) Clean the tank and bowl manually, using a strong solution of disinfectant, hot soapy water and bristle brush. Scrub the flush channel in the upper rim of the bowl to remove buildup of deposits. Rinse thoroughly with clean hot water and dry completely.

ITEM	IDENTIFICATION	SOURCE
Disinfectant	Lysol (or equivalent)	Commercially Available
Soap	All purpose liquid soap	Commercially Available
Trichloroethylene	Federal Specification O-T-634C	Any Approved Source

Cleaning Materials
Table 401

Monogram Sanitation

COMPONENT MAINTENANCE MANUAL PN 17000 & 17010 Series

REPAIR

1. Repair

Only a worn or damaged component should be removed from the toilet tank. Unnecessary disassembly is not recommended. The instructions which follow are provided to disassemble the components of the toilet into their respective detail parts in order to repair or replace an item. Refer to the Illustrated Parts List section for description and identification of detail parts.

- A. Item numbers appearing on the exploded view illustrations have been assigned in a typical order of disassembly. Disassemble only to the extent necessary to repair or replace a part.
- B. Follow the standard shop practice for inspection of detail parts.
- C. Using an ohmmeter, check circuit continuity with the flush button depressed. The motor windings should exhibit a low resistive circuit (3 ohms max).
- D. Any necessary soldering is confined to electrical connections only using SN60WARP2 solder. See the toilet wiring diagram.
- E. Repair of the toilet is confined to replacement of damaged or worn components, except that minor scratches can be repaired in accordance with standard shop practices.
- F. Replace any item found to be damaged or worn. Replace all gaskets, seals, packings and rubber items.
- G. Reassemble the toilet in the reverse order of disassembly with particular attention to the following:

CAUTION: The toilet mounting plate and tank top are honeycomb panel construction. To prevent compression damage, do not over torque hardware when attaching any component to these items.

- (1) Bond new bowl gasket in place using Scotch Grip 1300 rubber adhesive (Minnesota Mining and Manufacturing Co.)
- (2) Bond new knife valve seals in place using Uralane 5738 A/BX epoxy adhesive (Furane Plastics, Inc.)
- (3) Apply Grade C locking compound (Loctite Corp.) to the threads of two No. 8 pan head screws (MS510957-46). Wipe excess compound from screws and install.

Monogram Sanitation

COMPONENT MAINTENANCE MANUAL PN 17000 & 17010 Series

- (4) Install new motor and pump assembly to the toilet mounting plate as follows:
 - (a) Remove the two No. 8 slotted head screws and the two No. 10 hex head bolts from the pump cover.
 - (b) Discard the cover and the two slotted head screws.
 - (c) Install the unit to the mounting plate using the two No. 10 hex head bolts (NAS501-3H20A). Lockwire the bolts using MS20995C20 lockwire.
 - (d) Apply Grade C locking compound (Loctite Corp.) to the threads of two No. 8 pan head screws (MS51957-46). Wipe excess compound from screws and install.
 - (e) Connect the motor leads to the leads of the flush switch harness (Black to Black, Orange to Red). See the wiring diagram.

Monogram Sanitation

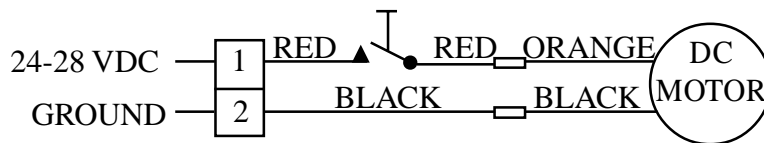
COMPONENT MAINTENANCE MANUAL PN 17000 & 17010 Series

CHECK

1. General

When assembly is completed, perform a functional check of the toilet as follows:

- A. Connect 24-28 VDC power to the toilet. See the wiring diagram for connection.
- B. Pour approximately 2 quarts of water into the toilet tank through the bowl.
- C. Press and hold the flush button. The flushing action should continue until the button is released. The swirl pattern should be consistent and vigorous, washing the complete inner surface of the bowl.



Wiring Diagram

Monogram Sanitation

COMPONENT MAINTENANCE MANUAL PN 17000 & 17010 Series

ILLUSTRATED PARTS LIST

1. Introduction

A. Purpose

This section lists, describes, and illustrates all component assemblies, subassemblies, and detail parts of the toilet assembly. It is comprised of illustration sheets and DPLs. Illustration sheets show exploded views and DPLs are arranged in a tabular form providing information about each item. Parts listed are considered to be replaceable for reasons of wear, age, or excessive abuse.

B. How to Use the Illustrated Parts List

(1) Identifying a Part

The item numbers shown in the DPL correspond to the item numbers appearing on the illustration sheet(s). To determine a part number, visually identify the part on the applicable illustration sheet and note its item number. Reference the figure and item number to the corresponding DPL. Follow the row of that item number across to the part number field.

(2) Assembly Relationship

Each assembly listed is followed immediately by a breakdown of its detailed parts, properly indented (by dot(s)) to show their relationship. Parts are listed in general order of disassembly, with the exception of attaching parts which are listed immediately following the item which they attach and which precede the details, if any, of that assembly. This relationship is shown as follows:

1 2 3 4 5 6 7

Assembly or Installation Descriptive Title

.Assembly

.Attaching parts for Assembly

. . Detail Parts for Assembly

. . . Subassembly

. . . Attaching Parts for Subassembly

. . . . Detail Parts for Subassembly

. Sub-Subassembly

. Attaching Parts for Sub-Subassembly

Monogram Sanitation

COMPONENT MAINTENANCE MANUAL PN 17000 & 17010 Series

(3) Effectivity

When two or more assemblies have a combined breakdown, an EFF CODE is assigned to distinguish any difference in their details. These codes are assigned alphabetically starting at the assembly level with the letter "A". This letter matches a detail item to its next higher assembly. Items where this column is left blank are applicable to all next higher assemblies

(4) Quantity

The UNITS PER ASSY column indicates the quantity of each item required for the next higher assembly or subassembly. The quantities shown in this column are the quantities required at a particular location and not necessarily the total quantity of parts in one assembly. "RF" is used to signify that an assembly has been previously listed and is being listed again for reference only. "AR" indicates that the quantity of this part is a bulk quantity and it is used as required.

C. Parts Replacement Data

The relationship between parts is defined in the nomenclature column. The following terms are used to show this relationship.

<u>TERM</u>	<u>ABBREVIATION</u>	<u>DEFINITION</u>
Superseded by	SUPSD BY	The part in the part number column is replaced by and not interchangeable with the part number shown in the notation.
Supersedes	SUPSDS	The part in the part number column replaces and is not interchangeable with the part shown in the notation.
Replaced by	REPLD BY	The part in the part number column is replaced by the item number shown in the notation. Both parts are of an alternate or interchangeable nature.
Replaces	REPLS	The part in the part number column replaces the item number shown in the notation. Both parts are of an alternate or interchangeable nature.

Monogram Sanitation

COMPONENT MAINTENANCE MANUAL PN 17000 & 17010 Series

D. Service Bulletin Incorporation

- (1) Assemblies, subassemblies, and detail parts subject to modification, deletion, addition, or replacement by an issued service bulletin are identified. The term (PRESB-XXXX) in the nomenclature column designates the original configuration and the term (POST SB-XXXX) identifies the modified configuration.
- (2) Parts deleted by service bulletins show the deleted part number but omit its nomenclature. Only the term (DELETED BY SB-XXXX) is shown in the nomenclature field.
- (3) Parts added by service bulletins include the notation (ADDED BY SB-XXXX) in the nomenclature column.

E. Special Terms and Symbols

- (1) The term MOREF is used when the part number exceeds 15 digits. The actual part number is listed in the nomenclature column.
- (2) The term ORDERNHA is used in the part number column or nomenclature field when the part cannot be ordered. Order the NHA shown in the DPL to procure the desired part.
- (3) The term NONPROC is used in the part number column for an assembly or subassembly that is not procurable in its listed form. NONPROC assemblies or subassemblies are not procurable and should not be ordered; however, the parts for that assembly or assembly of the subassembly could be procurable. A NONPROC assembly is created to allow a group of parts to be illustrated and listed as an assembly or subassembly.
- (4) Parts that are deleted are identified in the NOMENCLATURE column as "DELETED". The part number will stay in the PART NUMBER column and quantity will stay in the UNITS PER ASSY column. The nomenclature and EFF CODE will be deleted.

(5) Symbols

ATTACHING PARTS

* * *

-

Designates the beginning of a group of attaching parts.

Designates the end of a group of attaching parts.

A dash before an item indicates the item is not shown or does not have a leader line and item number on the illustration sheet.

Monogram Sanitation

COMPONENT MAINTENANCE MANUAL PN 17000 & 17010 Series

USAGE CODE LIST

A	17000-007
B.....	17000-009
C.....	17000-024
D	17000-026
E.....	17000-029
F	17000-037
G	17000-039
H	17010-007
J.....	17010-009
K	17010-024
L	17010-026
M.....	17010-029
N	17010-037
P	17010-039
Q	17010-043
R.....	17010-042
AA	17000-007, -009, -026, -029
AB	17000-007, -009, -024, -037, -039
AC	17000-029, (USED ON SN 001 THRU SN 003)
AD	17000-007, -009, -024, -026, -037, -029 (USED ON SN 004 AND SUBS); 17010-007, -009, -024, -026, -029, -037, -043
AE	17000-029 (USED ON SN 004 AND SUBS); 17010-029
AF	17000-007, -009, -024, -037, -039; 17010-007, -009, -024, -037, -039, -042, -043
AG.....	17000-024, -029, -037, -039; 17010-024, -029, -037, -039, -042
AH	17010-007, -009, -024, -026, -029, -037, -039, -042, -043
AJ	17000-024, -026, -037, -039, 17010-024, -026, -037, -039, -042
AK	17000-029 (USED ON SN 001 THRU SN 007)
AL	17000-007, -009, -024, -026, -037, -039; 17010-007, -009, -024, -026, -029, -037, -039, -042, -043
AM	17000-007, -009, -029, -037; 17010-007, -009, -024, -026, -029, -037, -039, -042, -043
AN	17000-024, -029 (USED ON SN 008 AND SUBS), -037, -039; 17010-024, -029, -037, -039, -042

Monogram Sanitation

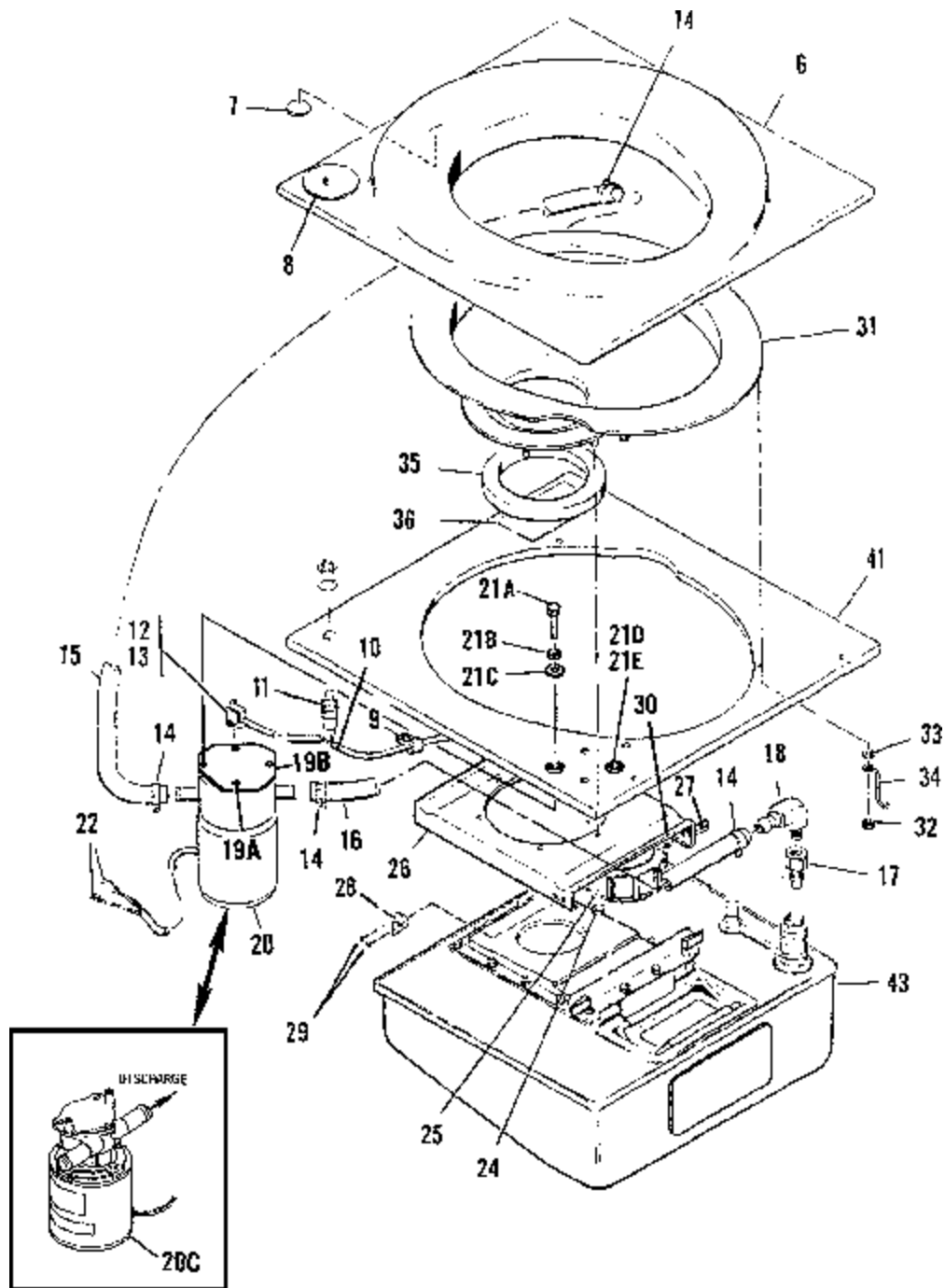
COMPONENT MAINTENANCE MANUAL PN 17000 & 17010 Series

USAGE CODE LIST CONTINUED

AP 17000-007, -009, -026, -039
AQ 17000-024, -037, -039;
..... 17010-024, -037, -039, -042
AR 17000-029 (USED ON SN 001 THRU SN 011)
AS 17000-029;
..... 17010-007, -009, -024, -026, -029, -037, -039, -042, -043
AT 17000-007, -009, -026;
..... 17010-007, -009, -026
AU 17000-024, -037, -039;
..... 17010-007, -009, -024, -026, -029, -037, -039, -042, -043
AV 17000-007, -009, -026, -029 (USED ON SN 004 AND SUBS);
..... 17010-007, -009, -026, -029, -043
AW 17000-007, -009, -024, -026, -029;
..... 17010-007, -009, -024, -026, -029, -039, -043
AX 17000-007, -009, -024, -026, -037, -039;
..... 17010-007, -009, -024, -026, -037, -039, -043
AY 17000-007, -009, -026, -029;
..... 17010-007, -009, -024, -026, -029 (USED ON SN 012 AND SUBS), -037, -039
BA 17000-037, -039;
..... 17010-037, -039, -042
BB 17000-007, -009, -026;
..... 17010-007, -009, -043
BC 17000-009, -026;
..... 17010-009, -026
BD 17000-007, -009;
..... 17010-007, -009, -043
BE 17000-024, -037;
..... 17010-037
BF 17000-007, -009, -026
..... 17010-007, -009, -026, -043
BG 17000-039;
..... 17010-024, -039, -042

Monogram Sanitation

COMPONENT MAINTENANCE MANUAL PN 17000 & 17010 Series



Toilet Assy
FIGURE 1

Monogram Sanitation

COMPONENT MAINTENANCE MANUAL PN 17000 & 17010 Series

FIG. ITEM	PART NUMBER	AIRLINE STOCK NO.	NOMENCLATURE							EFF CODE	UNITS PER ASSY
			1	2	3	4	5	6	7		
R	1 -1	17000-007								A	RF
	-1A	17000-009								B	RF
	-B	17000-024								C	RF
	-1C	17000-026								D	RF
	-1D	17000-029								E	RF
	-1E	17000-037								F	RF
	-1F	17000-039								G	RF
	-2	17010-007								H	RF
	-2A	17010-009								J	RF
	-2B	17010-024								K	RF
	-2C	17010-026								L	RF
	-2D	17010-029								M	RF
	-2E	17010-037								N	RF
	-2F	17010-039								P	RF
	-2G	17010-043								Q	RF
	-2H	17010-042								R	RF

-ITEM NOT ILLUSTRATED
*** SUPPLIED LOOSE ITEM**

Monogram Sanitation

COMPONENT MAINTENANCE MANUAL PN 17000 & 17010 Series

FIG. ITEM	PART NUMBER	AIRLINE STOCK NO.	NOMENCLATURE 1 2 3 4 5 6 7	EFF CODE	UNITS PER ASSY
1 6	17000-105		. SEAT AND SHROUD ASSY (REPLD BY ITEM -6C)	C	1
-6A	17000-139		. SEAT AND SHROUD ASSY (REPLD BY ITEM -6C)	A,B,Q	1
-6B	17000-421		. SEAT AND SHROUD ASSY	AC	1
-6C	17000-195		. SEAT AND SHROUD ASSY (REPLD ITEMS 6 AND -6A)	AF	1
-6D	17000-197		. SEAT AND SHROUD ASSY		1
7	2258-12-1		. . PAD, SUPPORT	AE	8
8	17000-208		. . LABEL (PRESS TO FLUSH)		1
-8A	17000-423		. . LABEL (PRESS TO FLUSH)	AF	1
-8B	2393-15*		. SEAT AND COVER ASSY	AE	1
9	C10DK3		. CLAMP, CABLE (V81872)	D,L	1
-9A	C10DK35		. CLAMP, CABLE (V81872)	AM	1
-9B	120082		. SHIELD, PUSH BUTTON	C,F,G	1
10	17000-140		. SWITCH AND HARNESS ASSY (REPLD BY ITEM -10B)	E,M AT	1
-10A	17000-111		. SWITCH AND HARNESS ASSY		1
-10B	17000-438		. SWITCH AND HARNESS ASSY (REPLS ITEM 10)	AG Q	1
11	MS25089-3F		. . SWITCH, FLUSH		1
12	1-480698-0		. . PLUG, CONNECTOR (V00779)	AG	1
13	350690-1		. . PIN, CONNECTOR (V00779)	AG	2
-13A	MS3101A10SL4P		. . CONNECTOR	AT	1
-13B	B14D		. . WRISTLOC, DISCONNECT (V59730)		2
-13C	CA-3106F10SL- 4P-F80		. CONNECTOR	Q	1
-13D	MS3057-4A		. . STRAIN RELIEF	Q	1
14	C8PS		. CLAMP, HOSE (V66295)	AA	4
-14A	H8SS		. CLAMP, HOSE (V66295)	AU	4
15	17000-209-1		. HOSE, DISCHARGE	AC	1
-15A	17000-374-1		. HOSE, PUMP DISCHARGE	AD	1
-15B	17000-374-16		. HOSE, SUCTION (REPLS ITEM -16A)	C,K	1
-15C	17000-374-19		. HOSE, DISCHARGE	G,P,R	1

-ITEM NOT ILLUSTRATED

* SUPPLIED LOOSE ITEM

IPL170-2

Page 20
Feb 14/95

Monogram Sanitation

COMPONENT MAINTENANCE MANUAL PN 17000 & 17010 Series

FIG. ITEM	PART NUMBER	AIRLINE STOCK NO.	NOMENCLATURE 1 2 3 4 5 6 7	EFF CODE	UNITS PER ASSY
1					
16	17000-209-2		. HOSE, SUCTION	AC	1
-16A	17000-209-16		. HOSE, SUCTION (REPLD BY ITEM -15B)	C	1
-16B	TY24M		. CABLE TIE	C,K,N	1
-16C	17000-374-2		. HOSE, PUMP SUCTION	AV	1
-16D	17000-374-23		. HOSE, SUCTION	F,N	1
-16E	17000-374-24		. HOSE, SUCTION	G,P,R	1
17	B3T21		. PLUG, QUICK DISCONNECT (REPLD BY ITEMS -17A AND -17C)	AK	1
-17A	17000-175		. NIPPLE, QUICK DISCONNECT (REPLS ITEMS 17, -17B AND -17C)	BF	1
-17B	17000-137		. PLUG, DISCONNECT ASSY (REPLD BY ITEM -17A)	A,Q	1
-17C	17000-344		.NIPPLE QUICK DISCONNECT (REPLS ITEM 17)	AN	1
-17D	17000-341		. CONNECTOR, BARBED HOSE	BA	1
18	KF08-06PS90		. ELBOW (V30327)	AW	1
19A	NAS1189C3932N		. SCREW	E	2
19B	17000-316		.PLATE, MOTOR MOUNTING	E	1
20	17000-102		. MOTOR-PUMP ASSY (REPLD BY 17000-382)	AR	1
-20A	17000-141		. MOTOR-PUMP ASSY (REPLD BY 17000-382)	A,B	1
-20B	17000-382		. MOTOR-PUMP ASSY (REPLS 17000-102 AND 17000-141) (REPLD BY 17200-382*) (PRE SB17000-38-03	AZ	1
			*Uses Items 21D, 21E, -21J and -21K for attaching hardware.		

-ITEM NOT ILLUSTRATED

* SUPPLIED LOOSE ITEM

IPL170-2

Page 21
Feb 14/95

Monogram Sanitation

COMPONENT MAINTENANCE MANUAL PN 17000 & 17010 Series

FIG. ITEM	PART NUMBER	AIRLINE STOCK NO.	NOMENCLATURE 1 2 3 4 5 6 7	EFF CODE	UNITS PER ASSY
1	20C	17000-382*	. MOTOR-PUMP ASSY (SEE FIG. 3 FOR DETAILS) (REPLS 17000-382) (POST SB17000-38-03) ATTACHING PARTS		1
	-21	8-32UNCX1.00	. BOLT	E	2
	21A	NAS1189C08P16L	. SCREW	AB	2
	21B	MS35338-137	. WASHER	E	2
	21C	2392-25	. WASHER	E	2
	21D	A3135-017-024	. WASHER, COUNTERSUNK	AL	2
	21E	MS35489-97	. GROMMET	AS	2
	-21F	MS35489-94	. GROMMET	AB	2
	-21G	3752-34	. SPACER	E	2
	-21H	3752-35	. SPACER FLAT	AP	2
	-21J	MS15795-811	. WASHER	AL	2
	-21K	MS24693-C51	. SCREW	AH	2
	-21L	3752-3	. SPACER ***	C,F	2
	22	B14D	. . DISCONNECT (V59730)		2
	-23	17000-104	. SLIDE PLATE ASSY	BB	1
	-23A	17000-129	. SLIDE PLATE ASSY ATTACHING PARTS	AG	1
	24	NAS679C3M	. NUT		6
	25	AN960C10L	. WASHER ***		6
	26	17000-205	. . PLATE, SLIDE	BB	1
	-26A	17000-257	. . PLATE, SLIDE	AG	1
	27	17000-235-1	. . BRACKET, RECEPTACLE		1
	28	17000-235-2	. . BRACKET, RECEPTACLE ATTACHING PARTS		1
	29	MS51957-14	. . SCREW	A,B,D	4
	30	NAS679C04M	. . NUT ***	A,B,D	4
			*Uses Items 21D, 21E, -21J and -21K for attaching hardware.		

-ITEM NOT ILLUSTRATED
* SUPPLIED LOOSE ITEM

Monogram Sanitation

COMPONENT MAINTENANCE MANUAL PN 17000 & 17010 Series

FIG. ITEM	PART NUMBER	AIRLINE STOCK NO.	NOMENCLATURE 1 2 3 4 5 6 7	EFF CODE	UNITS PER ASSY
1					
31	17000-101		. BOWL ASSY ATTACHING PARTS		1
32	NAS679C3M		. NUT		4
33	AN960C10L		. WASHER ***		4
34	17000-234		. CLIP, HOSE RETAINING	AY	1
-34A	17000-234		. CLIP, HOSE RETAINING	AQ	3
35	17000-206		. GASKET, BOWL		1
36	17000-283		. LABEL, IDENTIFICATION (REPLD BY ITEM -40A)	A	1
-37	17000-265		. LABEL, IDENTIFICATION (REPLD BY ITEM -40A)	B	1
-38	17000-329		. LABEL, IDENTIFICATION (REPLD BY ITEM -40A)	C	1
-39	17000-348		. LABEL, IDENTIFICATION (REPLD BY ITEM -40A)	D	1
-40	17000-354		. LABEL IDENTIFICATION	E	1
-40A	17000-350		. LABEL IDENTIFICATION (REPLS ITEMS 36, -37, -38 AND -39)	AX	1
-40B	17200-350		(REPLD BY ITEM -40B) . LABEL IDENTIFICATION	AH	1
41	17000-178		(REPLS ITEM -40A) . PLATE, MOUNTING	C,D	1
-41A	17000-278		(REPLD BY ITEM -41C)		
-41B	17000-188		. PLATE, MOUNTING	A,B	1
-41C	17000-193		. PLATE, MOUNTING	AC	1
			. PLATE, MOUNTING	AJ	1
-41D	17000-194		(REPLS ITEM 41)		
-41E	17000-214		. PLATE, MOUNTING	AE	1
			. PLATE, MOUNTING	H,J,Q	1

-ITEM NOT ILLUSTRATED
* SUPPLIED LOOSE ITEM

COMPONENT MAINTENANCE MANUAL

PN 17000 & 17010 Series

-ITEM NOT ILLUSTRATED
*** SUPPLIED LOOSE ITEM**

COMPONENT MAINTENANCE MANUAL

PN 17000 & 17010 Series



Monogram Sanitation

COMPONENT MAINTENANCE MANUAL PN 17000 & 17010 Series

FIG. ITEM	PART NUMBER	AIRLINE STOCK NO.	NOMENCLATURE 1 2 3 4 5 6 7	EFF CODE	UNITS PER ASSY
2					
-1	17000-142		TANK ASSY	A	RF
-1A	17000-130		TANK ASSY	B	RF
-1B	17000-179		TANK ASSY (REPLD BY ITEM -1D)	C	RF
-1C	17000-190		TANK ASSY	D	RF
-1D	17000-364		TANK ASSY (REPLS ITEM -1B)	E	RF
-1	17000-372		TANK ASSY	F	RF
-1F	17000-425		TANK ASSY	G	RF
-1G	17000-426		TANK ASSY	H	RF
-1H	17000-434		TANK ASSY	J	RF
2	17000-254		. BRACKET, FASTENER SUPPORT (REPLS ITEM -2A)		1
-2A	17000-233		. BRACKET, FASTENER SUPPORT (REPLD BY ITEM 2) ATTACHING PARTS	A,B	1
3	NAS679C08M		. NUT		4
4	AN960C8		. WASHER ***		4
5	19-10-081-10		. FASTENER, SWELL (V94222)		2
6	AN960C8		. WASHER		6
-7	AN960C8L		. DELETED		2
8	17000-215		. COVER, KNIFE VALVE ATTACHING PARTS		1
9	NAS679C08M		. NUT		10
10	AN960C8		. WASHER ***		10
11	17000-220		. SLIDE		2
12	17000-217		. GASKET		1
13	17000-222		. SEAL, KNIFE VALVE		1
14	17000-110		. ACTUATOR ATTACHING PARTS		1
15	17000-226		. NUT ***		1
16	17000-216		. VALVE, KNIFE		1
17	17000-229		. PLATE ATTACHING PARTS		1
18	MS24622-15		. SCREW, TAPPING ***		2

-ITEM NOT ILLUSTRATED
* SUPPLIED LOOSE ITEM

IPL170-2

Page 26
Feb 14/95

Monogram Sanitation

COMPONENT MAINTENANCE MANUAL PN 17000 & 17010 Series

FIG. ITEM	PART NUMBER	AIRLINE STOCK NO.	NOMENCLATURE 1 2 3 4 5 6 7	EFF CODE	UNITS PER ASSY
2					
19	S11589-010		. CAP STRIP (V25220)		1
20	2-010E540-80		. PACKING, O-RING (V02697)		1
21	17000-262		. SEAL		1
-22	17000-138		. SOCKET, QUICK DISCONNECT (REPLD BY ITEM 22A)	A,B	1
22A	17000-176		. COUPLER, QUICK DISCONNECT (REPLS ITEMS -22 AND -23)	A,B	1
22B	17000-343		. NIPPLE, QUICK DISCONNECT	AA	1
-22C	3-S20		. SOCKET, QUICK DISCONNECT	C,D	1
-23	17000-242		. PLUG, QUICK DISCONNECT (REPLD BY ITEM 22A)	AB	1
R 23A	17000-432		. FITTING, ADAPTER	H,J	1
R 23B	17000-342		. ELBOW, 90° STREET	G,H,J	1
-24	17000-283		. LABEL, IDENTIFICATION (REPLD BY ITEM -28A)	A	1
-26	17000-266		. LABEL IDENTIFICATION	B	1
27	17000-329		. LABEL, IDENTIFICATION (REPLD BY ITEM -28B)	C	1
-28	17000-355		. LABEL IDENTIFICATION	D	1
-28A	17000-351		. LABEL IDENTIFICATION (REPLDS ITEMS -24)	AC	1
-28B	17000-330		. LABEL IDENTIFICATION (REPLS ITEM 27)	C	1
29	17000-223		. LABEL SERVICE INSTRUCTION		1
-30	17000-144		. TANK SUB-ASSY	A	1
-31	17000-134		. TANK SUB-ASSY	B	1
32	17000-180		. TANK SUB-ASSY	C	1
-33	17000-191		. TANK SUB-ASSY	D	1
-33A	17000-365		. TANK SUB-ASSY	E,G	1
-33B	17000-373		. TANK SUB-ASSY	F	1
-33C	17000-391		. TANK SUB-ASSY	H	1
R -33D	17000-435		. TANK SUB-ASSY	J	1
35	17400-209		. BRACKET	AD	1
R 37	177121035		. CAP, POUR SPOUT		1
R 39	177121034		. SEAL		1

-ITEM NOT ILLUSTRATED

* SUPPLIED LOOSE ITEM

Monogram Sanitation

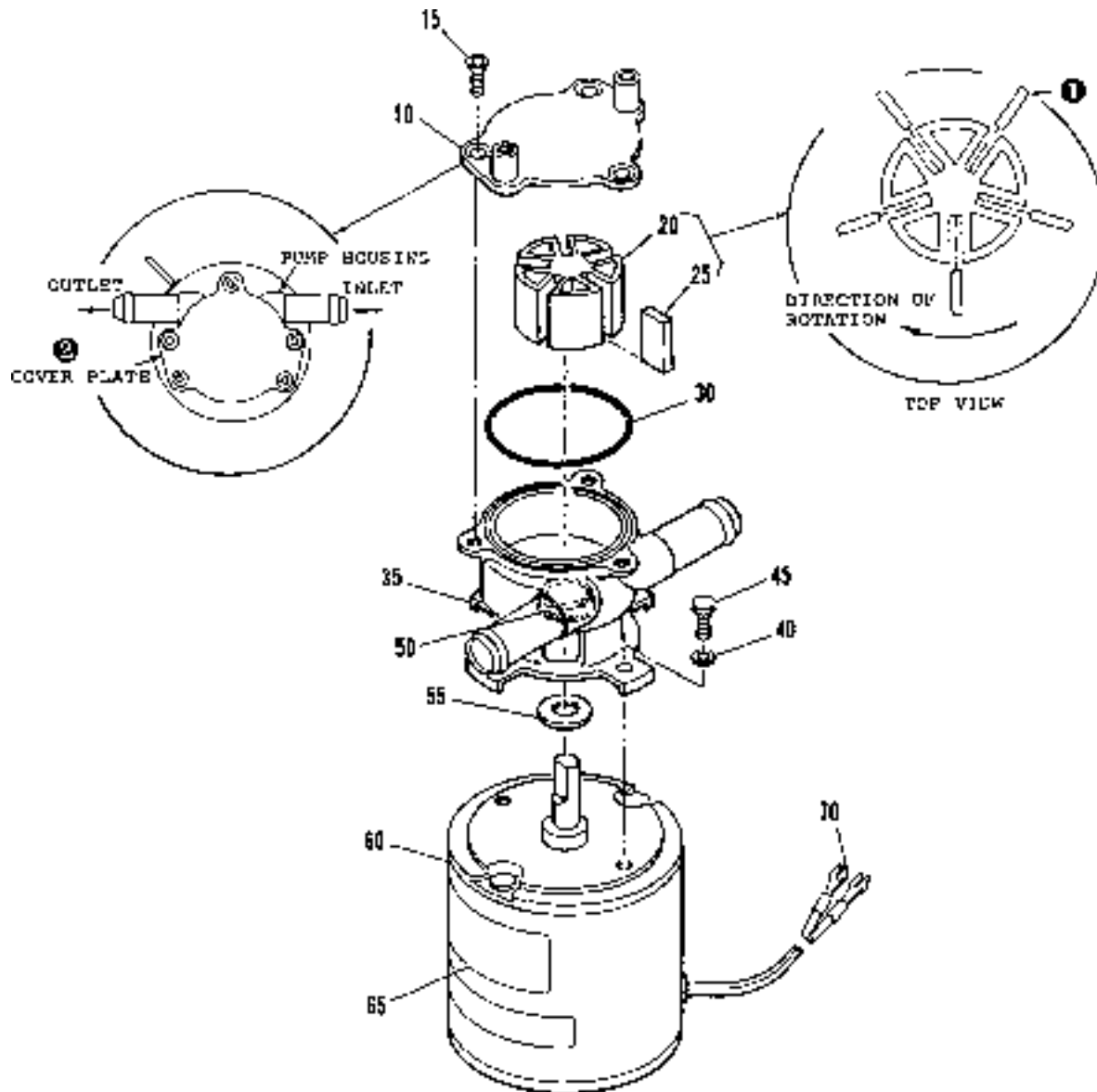
COMPONENT MAINTENANCE MANUAL PN 17000 & 17010 Series

USAGE CODE LIST

A	17000-142
B.....	17000-130
C.....	17000-179
D	17000-190
E.....	17000-364
F	17000-372
G	17000-425
H	17000-426
J.....	17000-434
AA	17000-364, -372, -425, -426, -434
AB	17000-142, -130, -179, -190
AC	17000-042, -364, -372, -425, -426, -434
AD	17000-142, 179, -190, -364, -372, -425, -426, -434

Monogram Sanitation

COMPONENT MAINTENANCE MANUAL PN 17000 & 17010 Series



- ❶ Install fin (25) with corner radius facing outward and toward the direction of rotation.
- ❷ Cover plate (10) shall be oriented as shown.

Motor-Pump Assy
FIGURE 3

Monogram Sanitation

COMPONENT MAINTENANCE MANUAL PN 17000 & 17010 Series

FIG. ITEM	PART NUMBER	AIRLINE STOCK NO.	NOMENCLATURE							EFF CODE	UNITS PER ASSY
			1	2	3	4	5	6	7		
R	3										
	-1	17200-382									RF
	-5	17000-520									1
	10	17000-519									1
	15	MS2469C69									3
	20	17000-521									1
	25	17000-522									5
	30	2-032N506-65									1
	35	17000-518									1
	40	MS35333-73									2
	45	NAS501-3-3A									2
	50	17000-523									1
	55	17000-524									1
	60	17000-384									1
	65	17200-507									1
	70	B14D									2

-ITEM NOT ILLUSTRATED
* SUPPLIED LOOSE ITEM

IPL170-2

Page 30
Feb 14/95